

POLYSCREEN®



Class 1
Bs3d0 - Pass



GREENGUARD
GOLD



IMO

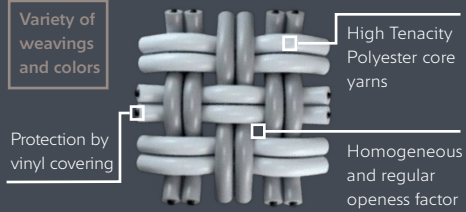
POLYSCREEN® 475



BANDALUX

BANDALUX

POLYSCREEN® 475



GRAN EFICIENCIA TÉRMICA Y LUMÍNICA CON ESTÉTICA TEXTIL

- Screen ligero de aspecto textil que proporciona visibilidad exterior y eficacia térmica (5% apertura).
- Excelente protección térmica gestión de hasta el 93% de energía solar (Gtoti = 0.23).
- Rendimiento energético: contribuye al ahorro energético en calefacción y aire acondicionado.
- Filtrado de la luz muy eficaz: bloqueo del 96% de la luz (TV=4%).
- Tejido sostenible, respetuoso con la salud y el medio ambiente, 100% reciclable.
- Calidad del aire: inoloro, no desprende COV (certificado Greenguard Gold).
- Enrolle perfecto incluso para grandes dimensiones (ancho 250-300 cm).
- Resistencia a condiciones meteorológicas extremas (IMO) y al cloro.

EFFICACITÉ THERMIQUE ET LUMINEUSE ALLIÉES À L'ESTHÉTIQUE DU TEXTILE.

- Screen léger avec un aspect textile, qui offre une bonne visibilité extérieure et efficacité thermique (5 % d'ouverture).
- Protection thermique renforcée : jusqu'à 93 % de l'énergie solaire maîtrisée (Gtoti = 0.23).
- Performances énergétiques : contribue aux économies de chauffage et de climatisation.
- Filtre efficacement la lumière : 94 % de la lumière stoppée (TV = 6 %).
- Tissu éco-conçu, respectueux de la santé et de l'environnement, 100 % recyclable.
- Qualité de l'air : sans odeur, il ne dégage pas de COV (certifié Greenguard Gold).
- Excellent enroulement même en grandes dimensions (largeur 250-300 cm).
- Résiste aux conditions météorologiques en milieux les plus extrêmes (IMO), résistance au chlore.

GREAT THERMAL EFFICIENCY AND SUNLIGHT MANAGEMENT, WITH A TEXTILE APPEARANCE

- A light screen with a textile appearance that provides visibility to the outside and great thermal efficiency (5% opening).
- Excellent thermal protection, managing up 93% of solar heat (both indoors and outdoors: (Gtoti = 0.23).
- Energy efficiency: contributes to energy savings in heating and air conditioning.
- Highly efficient sunlight filter: blocks 96% of the sunlight (TV=4%).
- A sustainable, 100% recyclable, environmentally friendly and health-friendly fabric.
- Air quality: colorless, VOC emission free (Greenguard Gold certified).
- Perfect roll, even in large sizes (250-300 cm in width).
- Resistant to extreme climate conditions (IMO) and chlorine.

GRANDE EFFICIENZA TERMICA E LUMINICA CON ESTETICA TESSILE

- Screen leggero dall'aspetto tessile che fornisce visibilità esterna ed efficacia termica (5% apertura).
- Eccellente protezione termica, gestione fino al 93% di energia solare (Gtoti = 0.23).
- Rendimento energetico: contribuisce al risparmio energetico nel riscaldamento e nell'aria condizionata.
- Filtraggio della luce molto efficace: blocco del 96% della luce (TV=4%).
- Tessuto sostenibile, rispettoso della salute e dell'ambiente, 100% riciclabile.
- Qualità dell'aria: inodore, non rilascia COV (certificato Greenguard Gold).
- Avvolgimento perfetto anche per grandi dimensioni (larghezza 250-300 cm).
- Resistenza a condizioni meteorologiche estreme (IMO) e al cloro.

PROPERTIES



MAINTENANCE



CERTIFICATES

FABRICS CERTIFICATES



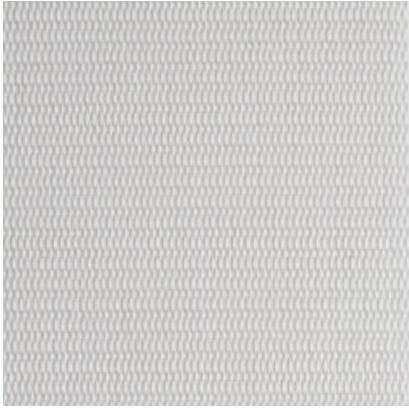
COMPANY & SYSTEMS CERTIFICATES



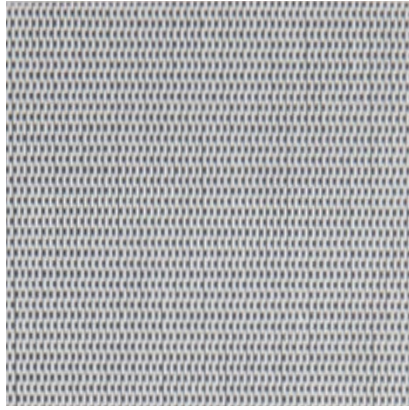
Contributing to Ecofriendly Building



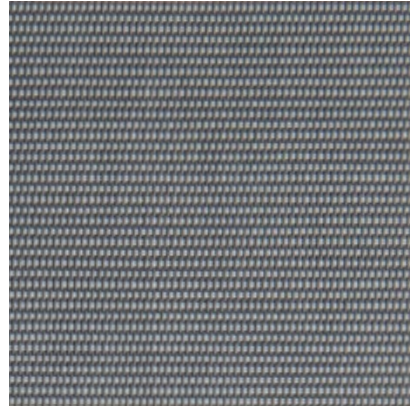
FIND MORE AT — contract.bandalux.com



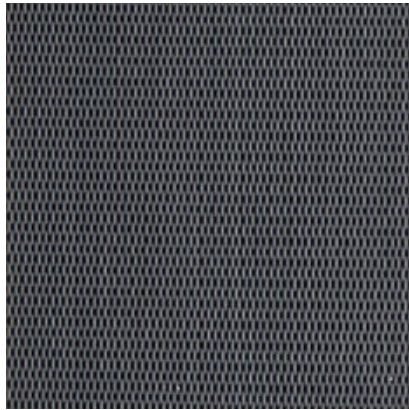
White
Ref. 21002



White Grey
Ref. 21021



Grey Pearl
Ref. 21072



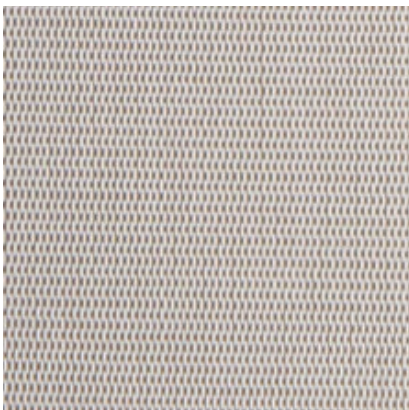
Grey Ebony
Ref. 21084



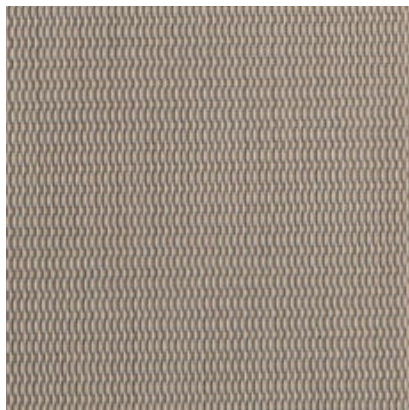
Ebony
Ref. 21080



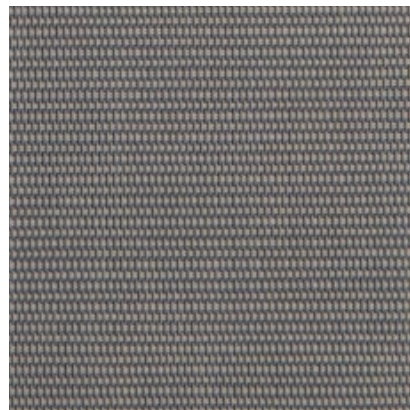
White Linen
Ref. 21220



White Sand
Ref. 21922



Pebble Sand
Ref. 21077



Grey Sand
Ref. 21030



OF 5%

POLYSCREEN® 475

BANDALUX

TECHNICAL DATA

Composición / Composition / Composition / Composizione	-	75% PVC + 25% PES
Peso / Poids / Weight / Peso	-	445 g/m ² - 15,70 oz/yd ²
Espesor / Épaisseur / Thickness / Spessore	EN ISO 5084	0,68 mm - 0,027"
Ancho de rollo / Largeur rouleau Roll width / Larghezza del tessuto	-	250 cm - 98"
Grado de apertura / Coefficient d'ouverture Openess Factor / Grado di apertura (%)	-	5%
Resistencia al fuego / Classement feu Fire classification / Resistenza al fuoco	DIN EN 13501-1 EN 13773 NFPA 701	Bs3d0 Class 1 Pass
Wheelmark	IMO Res.MSC.307(88)-(2010 FTP Code) IMO MSC/Circ. 1102	Pass
Resistencia al desgarro / Résistance à la déchirure Tear resistance / Resistenza alla trazione (daN)	EN ISO 13937-3	5 daN - 4,6 daN
Resistencia a la ruptura / Résistance rupture Tensile strength / Resistenza alla rottura (daN/5cm)	EN ISO 13934-2	171 daN - 147 daN
Resistencia a la luz / Résistance à la lumière Light Fastness / Resistenza alla luce (Grey Scale)	EN ISO 4892-2 (exterior)	5/5 4/5 White
Resistencia a la luz / Résistance à la lumière Light Fastness / Resistenza alla luce (Blue Scale)	EN ISO 105 B02 (interior)	8/8 7/8 White
Test de olores / Test d'odeur / Odour test / Test degli odori	PV-3900	3 Pass
Resistencia en ambientes salinos Résistance aux environnements salins Durability in saline environment Resistenza in ambienti salini	EN ISO 112-017:92 ISO 9227:90	Sin cambios en la superficie (max.nivel) Aucun changement en surface (niveau max.) Whitout changes in surface (max. level) Senza cambi in superficie (nivele mass)
Actividad antimicrobiana / Activité antibacterienne Antimicrobial activity / Attività antimicrobica	ASTM 2180-01	Inhibe la proliferación de bacterias Pas de prolifération de bactérie Microorganism growth inhibition Impedisce la proliferazione dei batteri
Material reciclado / Matériaux recyclés Recycled material / Materiali riciclati	-	2% Pre-consumer
Imprimible / Imprimable Printable / Stampabile	-	Si / Oui Yes / Si

THERMAL FACTORS

OPTICAL FACTORS

Ref.	Colors	EN52022-1 (Standard C and D)								EN410 - EN14500 - EN14501							
		% Ts	% Rs	% As	G _{tot} int Glazing C		G _{tot} int Glazing D		% Tv	% Rv	% Tv,n-n	% Tv,n-diff	Glare Control Class	Night Privacy Class	Visual Contact Class	Daylight Utilisation Class	
					G _{tot}	CLASS	G _{tot}	CLASS									
21080	Ebony	6	3	91	0,5	0	0,28	2	6	3	5	0,5	3	2	2	1	
21084	Grey Ebony	7	12	81	0,48	1	0,27	2	6	12	5	1	3	2	2	1	
21072	Grey Pearl	9	24	71	0,46	1	0,28	2	7	38	3	4	2	2	2	1	
21030	Grey Sand	9	18	73	0,46	1	0,27	2	7	19	5	2	1	1	3	1	
21077	Pebble Sand	14	30	56	0,43	1	0,26	2	10	31	6	4	1	1	3	1	
21002	White	22	67	11	0,35	1	0,25	2	19	77	5	14	0	2	1	2	
21021	White Grey	12	46	42	0,38	1	0,25	2	11	53	5	6	1	1	2	1	
21220	White Linen	23	62	15	0,37	1	0,26	2	20	70	5	14	0	2	1	2	
21922	White Sand	18	53	29	0,36	1	0,24	2	13	59	5	8	1	1	2	2	

The technical data above are average values with a +/- 5% tolerance. The values quoted above represent results of standards and internal tests performed and are provided for information only to enable to make the best use of our products. To ensure warranty effectiveness, refer to warranty certificate concerned available on demand. Our products are subjects to technical evolutions, we remain entitled to modify the characteristics of our products at any time. The buyer of our products is responsible for checking the validity of the above data.